

## PTX 661 PRODUCT NOTE

### Hammer Union Pressure Transmitter

- $\pm 0.1\%$  FS accuracy
- NACE compatible
- CENELEC Intrinsically Safe Certified
- FM/CSA Class I, Div 1 Intrinsically Safe Pending
- CE marked
- Fast response time (2 kHz)
- Repairable



The PTX 661 Hammer Union Pressure Transmitter has been designed for use in extremely harsh environments in both on-shore and off-shore Oil Drilling operations where high shock and vibration is likely to be encountered. The transmitter is available in both the 1502 and 2202 WECO Wing Union configurations, both of which are NACE sour gas compatible.

The PTX 661 differs from other Hammer Union Pressure Transmitters in that it has a replaceable pressure transmitter insert which substantially reduces the high cost of transmitter replacement. With a 2 kHz response time, the device is suitable for measuring static and dynamic mud pressure.

The PTX 661 incorporates Druck's proprietary high-accuracy silicon sensor with up to 2.5 times better accuracy than many competitive devices. The low-volume oil-fill technology allows response times of faster than 2 kHz. The field-proven 4-20mA electronics, packaged in a rugged enclosure, provide power supply regulation, reverse polarity, overvoltage and EMC protection. The fully encapsulated design provides exceptional reliability in high shock and vibration environments.

The PTX 661 is CENELEC intrinsically safe certified and has FM and CSA Class I, Div 1 (Groups A, B, C, D) intrinsically safe pending.

## STANDARD SPECIFICATION

Operating Pressure Ranges  
0 to 5000, 6000, 10,000 and 15,000  
psia or psi sg

Overpressure  
2X FS to a maximum of 20,000 psi

Pressure Containment  
30,000 psi max

Pressure Media  
Fluids compatible with 316L Stainless  
Steel (NACE compatible), Inconel X750  
and Inconel 625

Supply Voltage  
10-28 Vdc  
The minimum supply voltage that must  
appear across the transmitter terminals  
is 10 Vdc and is calculated by:  
 $V_{min} = V_s - (0.02 \times R_L)$

Output Current  
4-20 mA (2-wire configuration)

Zero Setting  
 $\pm 1\%$  FS @ 75°F

Span Setting  
 $\pm 0.5\%$  FS @ 75°F

Combined Non-linearity,  
Hysteresis and Repeatability  
 $\pm 0.1\%$  FS. BSL

Temperature Limits  
Process: -40° to +230°F  
Ambient: -40° to +230°F  
Storage: -60° to +300°F  
Compensated: -40° to +176°F

Temperature Effects  
TEB:  $\pm 1\%$  over the compensated range

Weight  
6 pounds nominal

Response Time  
Faster than 0.5msec. (2 kHz)

Pressure Connection  
-8547 WECO Wing Union #1502 (shown  
in drawing)  
-8593 WECO Wing Union #2202

Ingress Protection  
Nema 4X

Safety Classifications  
CE marked  
Baseefa Eex ia IIC T4 amb 80°C  
BAS No. Ex97D2058  
Factory Mutual Research Intrinsic Safe,  
Class I, Div 1 Groups A, B, C  
and D Pending  
Canadian Standards Association  
Intrinsic Safe Class I, Div 1,  
Groups A, B, C, D Pending

Electrical Connection  
-1 10-pin LEMO Connector  
P/N: EGG-4K-310  
-2 6-pin Bayonet Connector  
P/N: PTIH-10-6P  
-3 2-pin Glenair Connector  
P/N: GC 379-2-14S-2P

## OPTIONS

Carrying Handle P/N: XA2448-1-01  
Insertion/Extraction Tool P/N: F2186-1  
Replaceable Pressure Transmitter Insert  
P/N: PTX 721-8518 (state range)  
NIST- traceable 9-pt Room Temperature  
Calibration Certificate

## RELATED PRODUCTS

1. PTX 500/600 Pressure Transmitter
2. PTX/PMP 1240 Pressure Transmitter
3. MDK 24/MDK-LV Lightning Arrester
4. DPI 280 Series Indicators

## ORDERING INFORMATION

Please state the following:  
(1) Type PTX 661-85\*\*

Code	Model
PTX	Current output
	Code
	661 Base Model
	Code Electrical Connection
	1 10-pin LEMO Connector P/N EGG-4K-310
	2 6-pin Bayonet Connector P/N PTIH-10-6P
	3 2-pin Glenair Connector P/N GC 379-2-14S-29
	Code Pressure Connection
	8547 WECO #1502
	8593 WECO #2202

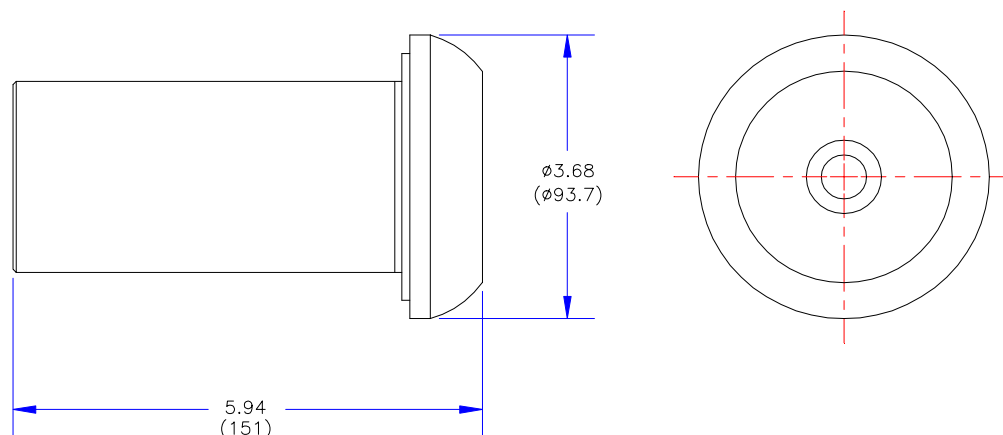
PTX 661 -1 85\*\*

- (2) Operating Pressure Range (sealed  
gauge or absolute)
- (3) Options (if required)

*Continuing development sometimes  
necessitates specification changes  
without notice.*

Druck is an ISO 9000 registered  
company.

## INSTALLATION DRAWINGS: Dimensions in inches/(mm)



Druck

Druck Incorporated  
4 Dunham Drive  
New Fairfield CT 06812  
Tel: (203) 746-0400  
Fax: (203) 746-2494  
E-Mail: sales@druck.com  
http://www.druck.com

Representative